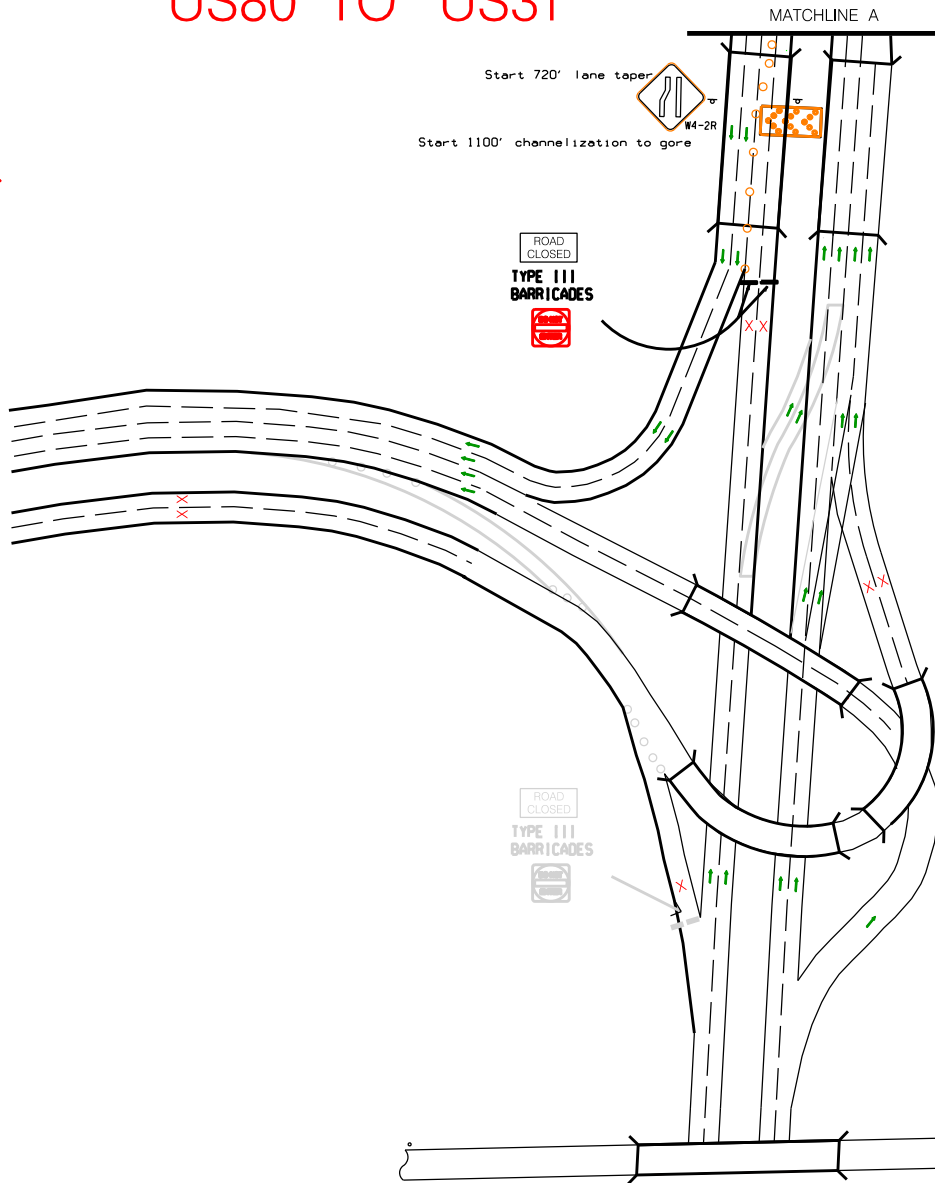


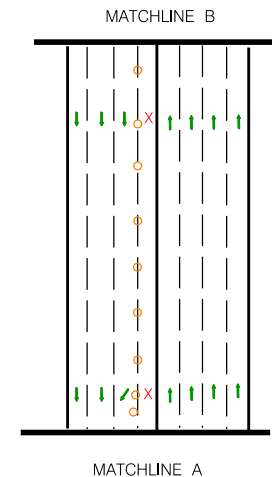
# 27 LOCATION 27 SB TERMINUS EXIT 167 US80 TO US31

PHILLIP DAY  
DUDLEY SMITH



MONTGOMERY AREA TRAFFIC TEAM  
PERSONNEL IN PLACE CONTROL ON SHLD LEADERS IN PLACE LOCATION INSPECTED

PERSONNEL	TRUCK No.
ARTIS BAXTER 334-430-2986	ST-18468 ATTENUATOR
MICHAEL THOMPSON	ST-16717 2 TON CC
KYLE JUNKIN	ST-17255 FORD CREW CAB/SERVICE
ANDRE TYSON	



☆ COVER ANY CONFLICTING I-65 SIGNS

REVISED: June 1, 2023